

Are Elephants Colorblind?



Exploring How Elephants See the World

How Do Humans See?

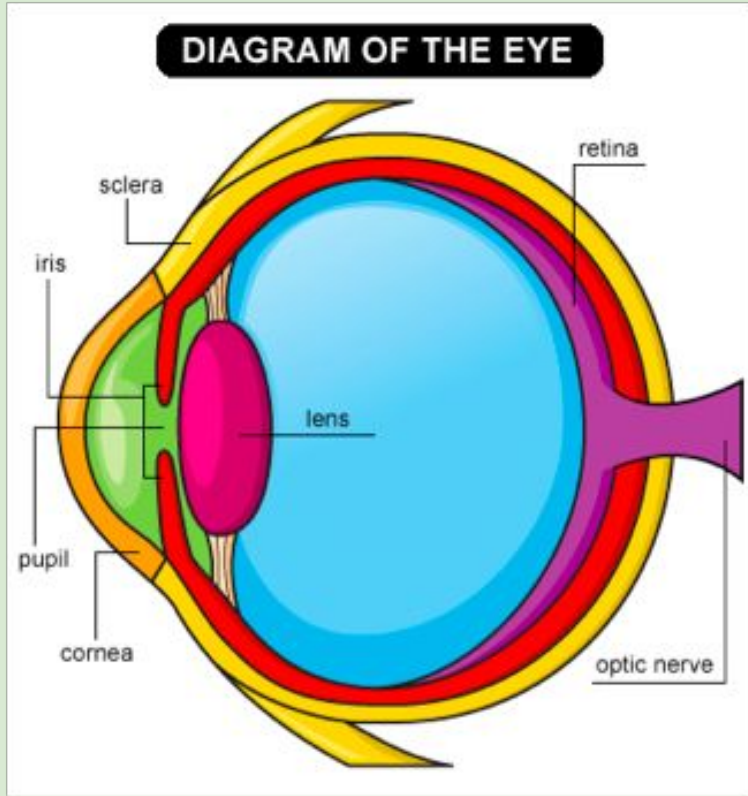
- **Humans have three types of cones in their retina: Red, Blue, and Green, a condition known as trichromic vision.**
- **These cones are specialized cells in the retina that respond to light.**
- **Cone cells help us see color and function best in bright light.**
- **Rod cells are also present and are most sensitive to changes in light, shape, and movement, helping us to see in dim light.**

How Do Elephants See

- Research has shown that elephants are colorblind compared to humans.
- In daylight, elephants are dichromatic, meaning they have two types of cones: one for red and one for green.
- However, this does not mean they cannot make sense of their visual world; it just means they see things differently.
- They can see blue and yellow, but reds and greens are not distinguishable.

Interestingly, colorblind humans share the same sets of visual pigments as elephants.

Picture of an Elephants Eye



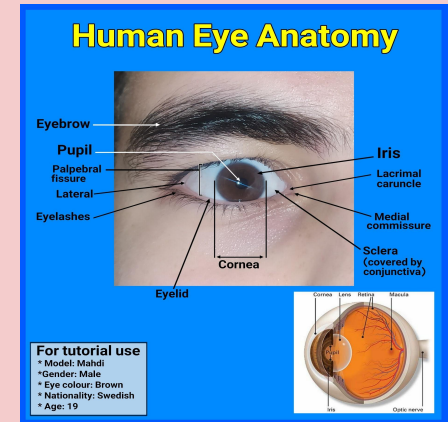
Elephant Vs. Human Vision

Elephant Vision:

- Clear vision only up to about 10 meters
- Can only see for short distances, up to 25 meters
- Have limited peripheral vision
- Eyes change with the time of day, a condition called arrhythmic vision

Human Vision:

- Better long-distance vision
- better peripheral vision



Elephants See in the Dark

Elephants have arrhythmic vision, which allows their vision to change with the time of day.

At night, their eyes are extremely sensitive to blue and violet light.

This allows them to see well with just a small amount of daylight, letting them see well into the night compared to humans.

However, if clouds block all moonlight, an elephant is "virtually blind."



Other Elephant Senses

- Since an elephant's eyesight is not as good as a human's, their other senses have adapted to make up for this difference.
- An elephant's sense of smell is unparalleled. Its 5 times better than humans.



- Their acute sense of smell, along with their senses of touch, hearing, and the ability to detect vibrations, are also used for communication.

Fun Facts About Elephant Eyes

- Elephants have long eyelashes to help protect their eyes from sand, dirt, and other particles.
- They have three eyelids: an upper, a lower, and a "third eyelid" called a nictating membrane.
- This nictating membrane moves vertically across the eye, protecting it while the elephant is feeding or bathing, and keeping it moist and clean.

